



ANSWERS YOU NEED. WHEN YOU NEED THEM.

Since opening our doors in 1966, clients have trusted American Structurepoint to consistently and efficiently deliver the highest-quality technical services and to provide clear, concise, and comprehensive answers to their most difficult questions.

With 500 professionals in-house across multiple disciplines, our team of talented and seasoned professional engineers, architects, fire investigators, roofing consultants, and building enclosure specialists provide industry-leading expertise to assist you.

American Structurepoint provides comprehensive professional engineering services to support property managers throughout the building life cycle for any property, no matter the material, system, or building type.

Pre-Purchase and Due Diligence

- Capital needs assessments
- Property condition assessments
- Structural assessments (ASCE and ACI protocols)
- Parking structure assessments
- Building envelope assessment
- Ten-year maintenance and repair plans
- Roofing condition assessment

Design/Construction Phase

- Structural design and detailing for new construction
- Owner's rep/construction administration
- Peer review: structural system + building envelope
- Building renovation
- Tenant buildout
- Occupancy change + adaptive reuse
- Strengthening for additional loads

Litigation Support

- Expert witness service
- Construction defect
- Cause/fault determination
- Dispute resolution
- Document review

Parking Garage Speciality Services

- New garage design
- 75-year service life design
- Maintenance/repairs
- Service life extension
- Condition assessments

Maintenance and Repairs

- Roof system assessment
- Reroofing design and detailing
- Façade inspection
- Troubleshooting structural or building envelope performance issues
- Structural or building envelope failure investigation
- Condition assessment/appraisal, repair documents
- Demolition engineering
- UAV/drone inspections
- Capital improvement and asset management planning
- Maintenance responsibilities document for owners, municipalities, property managers, and operators

CONTACT

Charles Gasser, SE, PE
Director of Project Development

CELL/EMAIL
630.297.6191
cgasser@structurepoint.com

OFFICE
56 S. LaSalle St., Suite 101
Aurora, Illinois 60505

WEB/SOCIAL
www.structurepoint.com/investigative



REPRESENTATIVE PROJECTS



PEORIA CATHOLIC DIOCESE
ST. PATRICK CHURCH PCA + LIFE CYCLE COSTS
WASHINGTON, ILLINOIS
RELIGIOUS SECTOR / COMPLETED 2019



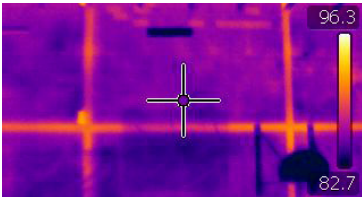
PEORIA CATHOLIC DIOCESE
ST. HYACINTH CHURCH STEEPLE AND STRUCTURE ASSESSMENT + REPAIR COSTS
LASALLE, ILLINOIS
RELIGIOUS SECTOR / COMPLETED 2019



MULTI-BUILDING RESORT FACILITY
CONDITION ASSESSMENT + REPAIR DOCUMENTS + CONSTRUCTION ADMINISTRATION
ILLINOIS
RESORT SECTOR / ONGOING



IVY TECH COMMUNITY COLLEGE
FACILITIES CONDITION ASSESSMENT + LIFECYCLE COSTS
INDIANA - 74 BUILDINGS ACROSS 18 CITIES
EDUCATION SECTOR / COMPLETED 2020



NEAL MATH & SCIENCE ACADEMY
STRUCTURAL ASSESSMENT, MATERIALS TESTING, AND REHABILITATION DESIGN
NORTH CHICAGO, ILLINOIS
EDUCATION SECTOR / ONGOING



ST. STEPHENSON MISSIONARY BAPTIST CHURCH
STRUCTURAL CONDITION ASSESSMENT FOR THE PRESERVATION OR DECONSTRUCTION
CHICAGO, ILLINOIS
RELIGIOUS SECTOR / DECONSTRUCTED 2021



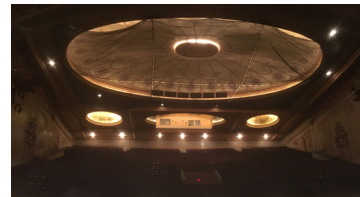
BUREAU GRAVITY
FAÇADE CONDITION ASSESSMENT + REHABILITATION
AURORA, ILLINOIS
COMMERCIAL SECTOR / COMPLETED 2015



CITY OF HAMMOND PARK DISTRICT
POOL CONDITION APPRAISAL - FIVE FACILITIES
HAMMOND, INDIANA
MUNICIPAL SECTOR / COMPLETED 2017



CITY OF OTTAWA BUILDING DEPARTMENT
EMERGENCY STRUCTURAL CONDITION ASSESSMENT REPORT + RECOMMENDATIONS
OTTAWA, ILLINOIS
MUNICIPAL SECTOR / COMPLETED 2018



MORRIS PERFORMING ARTS CENTER
PLASTER DAMAGE ASSESSMENT + REPAIR RECOMMENDATIONS
SOUTH BEND, INDIANA
MUNICIPAL + ENTERTAINMENT SECTOR / COMPLETED 2020



ALOFT HOTEL
STRUCTURAL REHABILITATION AND RENOVATION
SOUTH BEND, INDIANA
PARKING STRUCTURE AND HOTEL SECTOR / COMPLETED 2016



1909-1911 WEST SCHILLER AVENUE
NEW STRUCTURAL DESIGN
CHICAGO, ILLINOIS
RESIDENTIAL SECTOR / COMPLETED 2018



HANNA DESIGN GROUP
NEW STRUCTURE AT 113 MAIN STREET
OSWEGO, ILLINOIS
COMMERCIAL SECTOR / COMPLETED 2019



US DEPARTMENT OF VETERANS AFFAIRS
ASCE 41 SEISMIC EVALUATION
MULTIPLE SITES THROUGHOUT THE MIDWEST
HEALTHCARE SECTOR / COMPLETED 2018