

**LAND SURVEYING**  
CONSTRUCTION STAKING



AMERICAN  
**STRUCTUREPOINT**  
INC.



“ American Structurepoint provides clear, concise designs that are thorough and meet the requirements of the project without unnecessary complexity. Their surveying and layout team provides reliable, user-friendly staking in a timely manner. ”

Aaron Hughes  
Filson Earthwork Co.



**Established in 1966, American Structurepoint has become one of the most recognized firms in the Midwest.**

From assisting in the development of roads and bridges; wetland delineations; and construction of large and small commercial, retail, and mixed-use centers, American Structurepoint is a leader in surveying all aspects of the environment.

## Services

- » 3D Laser Scanning
- » ALTA/NSPS Land Title Surveys
- » Construction Staking
- » Geospatial
- » Hydrographic Surveys
- » Land Acquisition
- » Phase I Environmental Assessment
- » Property Condition Assessment
- » Right-of-Way Services
- » Topographic and Boundary Surveys
- » Transportation and Utility Route Surveys
- » Utility Coordination

## Equipment

- » 3D Laser Scanners
- » Digital Levels
- » Fully Robotic Total Stations
- » Latest Dual-Frequency GPS Receivers with GNSS





AMERICAN  
**STRUCTUREPOINT**  
INC.





# **From start to finish, accurate and clear construction staking improves productivity.**

After construction plans are produced, building the project requires construction staking in the field to show contractors where facilities should be constructed. American Structurepoint maintains a permanent staff of licensed staking crews to assist in this vital construction activity. The robotic and satellite tracking equipment we use provides precise, timely, and cost-effective solutions for contractors and developers in the construction process.

**MULTI-FAMILY**

**INDUSTRIAL/COMMERCIAL CONSTRUCTION**

**TRANSPORTATION/UTILITY INFRASTRUCTURE**



**UNIVERSITY OF INDIANAPOLIS, ROBERTS HALL** INDIANAPOLIS, INDIANA

This \$10 million project included the construction staking layout for a brand new five-story, 170-bed residence hall within the University of Indianapolis campus. Our work included creation of project control (horizontal and vertical), rough and final building footprint layout, and staking of all the on-site hardscape and utilities. Critical components of this project included timeliness, extreme accuracy, coordination with job site staff, and creation of construction staking tickets with detailed descriptions of daily site activities.









**INDIANA NATIONAL GUARD JOINT FORCES HEADQUARTERS** STOUT FIELD, INDIANAPOLIS, INDIANA

This expansion and alteration of the Indiana National Guard's headquarters includes 86,000 sft of new space and 80,000 sft of renovated space in several buildings. The project includes a 70-acre site with a complex network of utilities and logistical challenges. The site design incorporates a new drainage system to replace the existing failing system and also brings the site into compliance with the City's current codes. Our survey services included preparation of the site topographic survey and control, as well as building control for Wilhelm Construction and the post-construction utility as-builts for submittal to the City of Indianapolis and Citizens Energy Group.

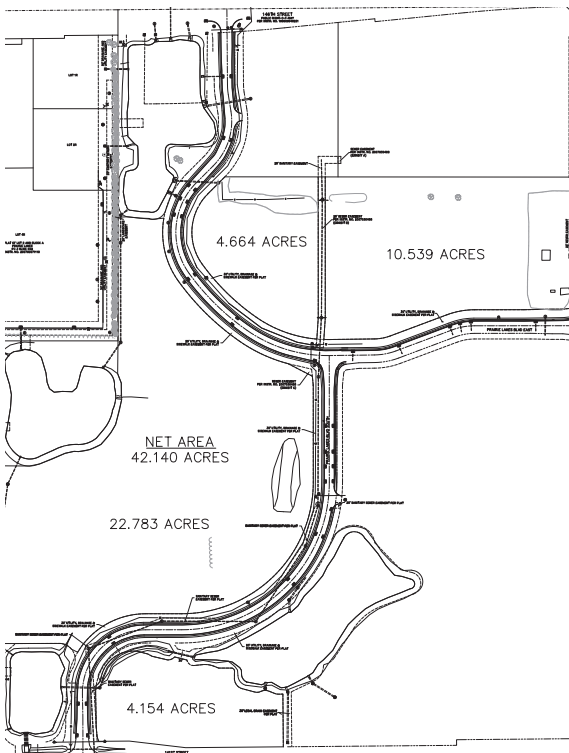






**PRAIRIE LAKES APARTMENTS**  
NOBLESVILLE, INDIANA

This sleek and modern 23-unit apartment complex sits on a 45-acre site within the Prairie Lakes development. Our surveyors provided layout of all the campus buildings, garages, and clubhouse, along with the internal roadways, hardscape, and sewers/utilities. The complex was built from the ground up for the ultimate modern amenities desired by young professionals today. Our Survey Group had multiple crews working full time, five days a week, for over a year and a half to complete this massive development project. This required constant communication with the on-site superintendent, as well as the various trades. Our surveyors delivered fast-paced and accurate on-site as-builts of the buildings as they were constructed, which ensured the water, sewer, and other utilities could be brought in within a time frame that met the certificate of occupancy requirements.





**CORPORATE CAMPUS EAST AND  
HAMILTON TOWN CENTER**  
NOBLESVILLE, INDIANA

American Structurepoint provided the overall surveying, due diligence, planning, and construction staking for creation of a five-mile economic development corridor and gateway to I-69, including a new multi-use outdoor mall and new commercial development. Overall, the corridor opened up nearly 3,000 acres for development. Surveying services included the layout for all the campus buildings, sewers, utilities, and hardscape. We also completed post-construction as-builts of all the campus sewers and utilities for delivery to the municipality and local utility companies. The construction was accomplished in phases with 21 different construction contracts being awarded.









## **ADDITIONAL CONSTRUCTION STAKING PROJECTS**

- **16th Street and Crawfordsville Road Roundabout Gas Relocations** Speedway, Indiana
- **82 Flats Luxury Apartments** Indianapolis, Indiana
- **Allison Stormwater Separation** Indianapolis, Indiana
- **Allpoints at Anson** Plainfield, Indiana
- **Amazon.com Building** Plainfield, Indiana
- **Americold Development** Phoenix, Arizona
- **Armed Forces Reserve Center, USACE Louisville** Fort Benjamin Harrison, Indiana
- **Battery Innovation Center** Crane, Indiana
- **Broad Ripple Mixed-Used Development** Indianapolis, Indiana
- **BP Harbor Canal Connection Project** East Chicago, Indiana
- **Citizens Energy Group Neighborhood Gas Main Relocations** Westfield, Indiana
- **Clay Terrace Lifestyle Center** Carmel, Indiana
- **Cummins Corporate Parking Structure** Columbus, Indiana
- **CVS Stores** Various Locations, Nationwide
- **FedEx Distribution Center** Zionsville, Indiana
- **Heartland Automotive** Lafayette, Indiana
- **Homes of Evansville Residential Development** Evansville, Indiana
- **I-465/I-65 Interchange** Indianapolis, Indiana
- **I-69 Section 5 P3 Design/Build** Monroe and Morgan County, Indiana
- **Meijer Store** Danville, Illinois
- **Municipal Airport Construction Layout** Kokomo, Indiana
- **NRP Senior Living Centers** Various Locations, Indiana
- **Regal-Beloit BTS Building at Allpoints Midwest** Plainfield, Indiana
- **Roche Lab “Building R” Consolidation** Indianapolis, Indiana
- **Terry Lee Auto Dealership Development** Noblesville, Indiana
- **TMI Electrical Solutions Solar Farms** Indianapolis, Indiana
- **SMC Manufacturing Expansion** Indianapolis, Indiana
- **US 31 Kokomo Bypass** Greenfield District, Indiana
- **Veterans Affairs Parking Structure** Indianapolis, Indiana
- **Wellbrooke of Westfield, The Center for Health and Wellness** Westfield, Indiana



With one of the largest survey crews in the Midwest and an extensive library of data, we generate accurate geospatial information within record time.

ARCHITECTURE + INTERIORS  
CIVIL ENGINEERING  
CONSTRUCTION SOLUTIONS  
ENVIRONMENTAL SERVICES  
IT SOLUTIONS  
INVESTIGATIVE  
LAND SURVEYING  
PLANNING + ECONOMIC DEVELOPMENT  
STRUCTURAL ENGINEERING  
TRANSPORTATION  
UTILITY INFRASTRUCTURE

[www.structurepoint.com](http://www.structurepoint.com)

